

**Administration of the Municipal Entity
City of Novomoskovsk**

**INVESTMENT PASSPORT OF
THE MUNICIPAL ENTITY
CITY OF NOVOMOSKOVSK**



2021

CONTENT:

1. Status of the Municipal Entity City of Novomoskovsk	3
2. Symbols of the City	3
3. Local Government Authorities	4
4. Geographical Position	4
5. Population	6
6. Labor Force and Employment	6
7. Novomoskovsk Agglomeration	7
8. Economic Potential of the Municipal Entity	8
8.1. Industry	9
8.2. Construction	12
8.3. Agriculture	12
9. Social Infrastructure	13
10. Infrastructure of the Municipal Entity	14
10.1. Transport Infrastructure	14
10.2. Civil Engineering Infrastructure	15
<i>10.2.1. Water Supply</i>	<i>15</i>
<i>10.2.2. Waste Water Disposal</i>	<i>15</i>
<i>10.2.3. Heat Supply</i>	<i>16</i>
<i>10.2.4. Gas Supply</i>	<i>16</i>
<i>10.2.5. Power Supply</i>	<i>16</i>
11. Industrial Parks of the Municipal Entity	17
11.1. Industrial Park of Novomoskovsk Joint Stock Company Azot Open JSC	17
11.2. Industrial Park of PromTechnoPark LLC	

1. Status of the Municipal Entity City of Novomoskovsk

The Municipal Entity – City of Novomoskovsk urban district – is an independent Municipal Entity making part of Tula region. The Charter of the Municipal Entity – City of Novomoskovsk urban district – was approved by Decision No. 9-1 of the Assembly of Deputies of the Municipal Entity City of Novomoskovsk dated December 05, 2008 and was registered on December 23, 2008 in Department of Central Administration of the Ministry of Justice of the Russian Federation for the Central Federal District in Tula region.

2. Symbols of the City



The arms of the Municipal Entity City of Novomoskovsk are an official symbol of its dignity, of historic and administrative importance of the Municipal Entity, as well as of the rights of its local authorities. Here is the exact description of the arms: «There is a golden hammer over two crossed silver picks in the upper red part; below on three green hills there are two golden amphorae overturned towards each other with silver streams flowing crosswise. The shield can be surrounded by the ribbon of the Order of the Red Banner of Labor».



The flag of the Municipal Entity City of Novomoskovsk is distinctively a legal symbol created and used in accordance with vexillological rules. The flag, together with the principal municipal symbol - the arms, is an official symbol of the Municipal Entity, of the unity of its territory, its population, of its rights and autonomy. Basic figures of the arms

of the Municipal Entity City of Novomoskovsk are of yellow, white and green colors. The symbols on the flag reproduce the symbols of the arms of the Municipal Entity City of Novomoskovsk.

3. Local Government Authorities

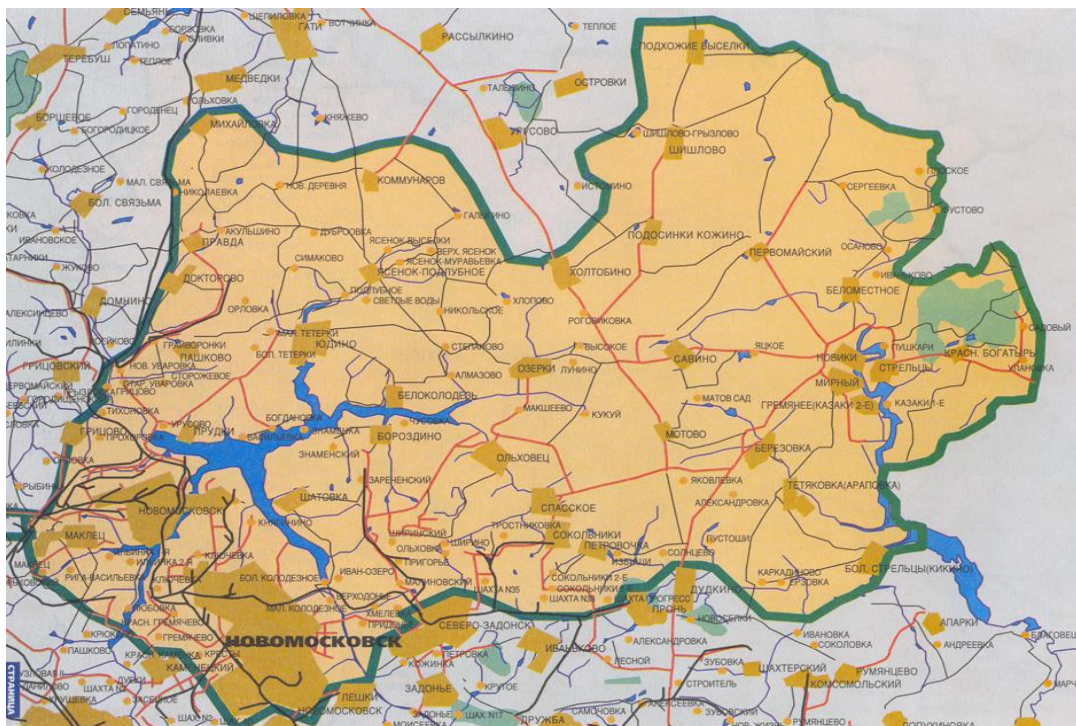
Local government authorities of the Municipal Entity– City of Novomoskovsk urban district – consist of:

- the Head of the Municipal Entity, the Chairman of the Assembly of Deputies;
- the Assembly of Deputies – a representative body of local government, elected directly by the population, that has the right to represent interests of the population and to make decisions on its behalf;
- the Novomoskovsk City Administration – an executive body of local government that has executive and regulatory functions and is governed by the Head of the City Administration.

4. Geographical Position

The Municipal Entity City of Novomoskovsk is situated in the north-east of Tula region. The urban district borders on Venyov district of Tula region in the north and north-west, on Kireyevsk district in the west, on Uzlovaya district in the south-west, on Kimovsk district in the south-east, and on Ryazan region in the east and Moscow region in the north-east.

The area of the Municipal Entity makes up 888 km² (3.5% of the region area). As of January 01, 2021 its population accounts for 133.0 thousand people including 121.7 thousand people as urban population and 11.3 thousand people as rural population.



The Municipal Entity consists of the city of Novomoskovsk (administrative center of the district) and 91 rural settlements. The city of Novomoskovsk is the second biggest city in Tula region. It is situated 50 km away from Tula and 220 km away from Moscow.

The urban district has a very favorable geographical position: its territory is intersected by the federal P132 Kaluga – Tula – Ryazan highway; by the regional P114 Kashira – Serebryanye Prudy – Kimovsk – Uzlovaya highway, by the Stavropol gas pipeline; Novomoskovsk can be reached by using the regional P140 Tula – Novomoskovsk road; to the west of the urban district there is a turn-off of the international «North – South» transport passage - primary federal M4 «Don» Moscow – Voronezh highway; there is also the railway Moscow – Voronezh line on the territory of the urban district; to the south of the district there is the Kaluga – Tula – Ryazhsk line.

The urban district is situated on the Central Russian Upland. Most of the territory is flat. Temperate continental climate is favorable for agriculture and animal breeding. Agriculture of the urban district specializes in cereals, potatoes, vegetables, fruit, feed crops, as well as in dairy farming and meat production.

There are three water storage ponds on the territory of the Municipal Entity: Lyubovskoye, Shatskoye, and Pronskoye. The biggest rivers are the Don, the Shat, and the Pronya. Mineral resources are featured by deposits of coal, pyrite and of common construction materials. The Municipal Entity City of Novomoskovsk has quite rich and explored mineral raw material base. You can see the list of minerals deposited on the territory of the Municipal Entity in Table No. 1.

On the territory of the urban district there are plants specializing in extraction of raw materials for construction industry, collective water supply intakes and single wells for extraction of fresh ground-water are exploited. Mineral resources of gypsum can satisfy regional and federal needs to a considerable degree and successfully compete on the Russian market.

Mineral and Raw Material Base of the Municipal Entity City of Novomoskovsk

Table No. 1

Type of mineral raw material	Number of deposits		Units of measurement	Reserves and expected reserves		
	total	Deposits under development included		Explored reserves		Expected reserves
				total	Reserves under development included	
limestone	2	1	Thousand m ³	9,552	4,058	3,900
gypsum	4	1	Thousand tons	1,695,076	664,994	
high-melting clay	1		Thousand tons	2,300		
sodium chloride	1	1	Thousand tons	573,656	573,656	
brick clay	1	1	Thousand m ³	537		
peat	5		Thousand tons			55
sand	2		Thousand m ³	2,078		

The Municipal Entity City of Novomoskovsk has diversified economy. Specialization of the industrial complex of the Municipal Entity City of Novomoskovsk is determined by development of the chemical industry. Other greatly developed industries are construction industry, machine-building industry, metal processing, and power engineering.

5. Population

At the beginning of 2021 the population of the Municipal Entity City of Novomoskovsk makes up 133.0 thousand people (9.18% of the region population), including 121.7 thousand people living in the city of Novomoskovsk, and 11.3 thousand people living in rural area. So 91.5% of the urban district population live in the city, while 8.5% live in rural areas. Density of population accounts for 149.8 people/km².

The gender structure of the population of the district is characterized by predominance of women, especially as far as the elder disabled age categories are concerned – the situation is typical for most of the Russian territories. The age structure of the population is regressive, with significant prevalence in number of the people of retirement age over the young. At the beginning of 2020 number of elder age cohort is almost as twice as more than number of young people. A great number of people of retirement and near retirement age promote further keeping the death rate rather high. Natural decline in the population in 2020 have accounted for 1513 people.

Age Structure of the Population of the Municipal Entity City of Novomoskovsk as of January 01, 2020

Table No. 2

Age	Number (thousand people)	Percentage (%)
Younger than employable age	21.0	15.7
Of employable age	72.5	54.2
Elderly than employable age	40.3	30.1

6. Labor Force and Employment

Employment situation in the Municipal Entity overall can be considered as good. At the beginning of 2020 employable population of working age accounts for 72.5 thousand inhabitants of the Municipal Entity; amount of economically active population is 74.1 thousand people; number of people involved in economy corresponds to 67.5 thousand people; registered unemployment rate of 2020 is 1.12% of economically active population.

On the whole, employment pattern on economic sectors for the district appears to be as follows: 36.2% belong to the industrial sector. High employment rate is observed in the educational sector as well, accounting for 12.9%, while 8% of population is involved in healthcare and social service, 8% - in trade. As for agricultural sector, there are only 1.4% of involved in economy population of the Municipal Entity.

7. Novomoskovsk Agglomeration

The Novomoskovsk agglomeration comprises such Municipal Entities as: Bogoroditsk district, city of Donskoy, Kimovsk district, Kireyevsk district, and Uzlovaya district.

Cities	Average annual population of the Municipal Entity, thousand of people. 2019	Average monthly salary of organizations' employees January-December, 2020	Investments in the fixed capital (thousand of rubles) January-December, 2020
Bogoroditsk district	50.2	50,364.6	541,028
City of Donskoy	62.8	31,509.9	782,375
Kimovsk district	37.2	32,652.8	1,646,980
Kireyevsk district	72.1	32,387.4	871,099
Uzlovaya district	78.8	38,373.1	4,197,814

8. Economic Potential of the Municipal Entity

Main Indicators Describing Social and Economic Development of the Municipal Entity City of Novomoskovsk in 2020.

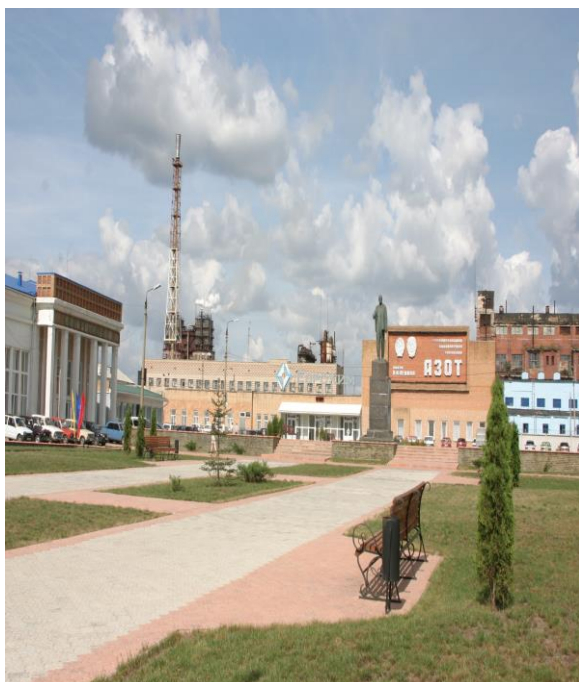
Table No. 3

Indicators	Units of measurement	In 2020 mln. rubles	% as compared to the same period of the previous year
1. Amount of shipped locally produced goods, works and services using own resources provided in all fields of activities: <i>including:</i>	mln. rubles	153,715.3	107.7
• <i>Manufacturing activities;</i>	mln. rubles	137,378.8	107.9
2. Amount of works carried out in the field of construction (by big and medium-sized organizations)	mln. rubles	...	83.2
3. Gross output of agricultural products (by all manufacturers)			
• Selling basic cattle breeds for meat production and poultry meat	tons	17,091.3	101.9
• Milk production	tons	21,526.8	105.1
• Eggs production	thousand pieces	4,574	63.5
4. Cattle stock (all manufacturers):			
• Cattle, total	heads	5,992	105.3
<i>including: cows</i>	heads	2,681	101.2
• Pigs	heads	556	72
• Sheep and goats	heads	1,205	74.9
5. Financial result	mln. rubles	24,196.5	93.8
6. Average monthly nominal payable wage in the urban district	rubles	43,036	109.6

8.1. Industry

In 2020 production output of the Municipal Entity's industrial enterprises accounted for 137,378.8 million rubles, that is 7.9% more than during the corresponding period the year before. Specialty of the Municipal Entity's industrial complex is defined by chemical industry development, accounting for 85 % of the total industrial production output, as well as production of any other non-metallic mineral goods – 6.2%, food production – 2.1%, machines and equipment production – 0.7%, production of rubber and plastic articles – 2.5%, production of paper, paperboard, as well as its bi-products – 2.8%, and other kinds of economic activity – 0.5%.

Chemical Production The Municipal Entity is ranked as one of the country's leaders in production of mineral fertilizers, as well as of some other articles of chemical production, manufactured by Novomoskovsk Joint Stock Company Azot Open JSC. In 2002 the enterprise was merged by EuroChem Mineral and Chemical Company (Russian leader in the field). The enterprise produces a wide range of mineral fertilizers, ammonia, urea, methanol, nitric acids of high concentration and special purity, argon, liquid oxygen, xenon, carbon



dioxide, and many other articles of chemical industry. About 70% of end products by Novomoskovsk Joint Stock Company Azot Open JSC are exported. Turnover of the enterprise's production on the domestic market has grown significantly in recent years – in regions of Central and Southern Federal Districts of the Russian Federation. In early 2008 EuroChem Mineral and Chemical Company Open JSC established 100% subsidiary enterprise Novomoskovsky Khlor in the industrial site of Novomoskovsk Joint Stock Company Azot Open JSC, the goal of which is to develop chlorine production, upgrade equipment, and adopt new technologies.

Among large chemical industrial enterprises there are Procter and Gamble-Novomoskovsk LLC (production of synthetic abstergents, nursery goods for family use, etc.); Aerozol Novomoskovsk LLC (production of household products in aerosol package); Polyplast Novomoskovsk LLC (Russian leader in production of specific chemicals for construction industry); Orgsintez LLC (production of ethane diacid); NIAP-Katalizator LLC (production of catalysts).



Manpower CIS LLC and Ascendant Industrial LLC provide in the city of Novomoskovsk a full range of skilled human resources solutions for chemical industry, enabling to establish accurate connection between business processes and human resources.

Production of rubber and plastic articles is performed by Novomoskovsk Plant of Polymer Pipes LLC.

Presence of *production of other non-metallic mineral goods* is also significant in the Municipal Entity City of Novomoskovsk. Knauf Gips Novomoskovsk LLC is the largest enterprise in this field, specializing in extracting and processing plaster stone, as well as in producing modern construction materials out of it: KNAUF-lists, KNAUF-plasterboard, and plaster stone extraction.



Production of other non-metallic mineral goods is performed by: Novomoskovsk Ceramic Materials Production Plant - CENTRGAZ JSC (production of high-quality brick, roof tile, and facing tile); Novomoskovskogneupor Open JSC (production of refractory products).

Production of finished hardware is performed by Novomoskovsk boiler-mechanical plant Branch of E-4 TSEM Open JSC (production of boiler-auxiliary equipment and pipelines for construction of thermal and nuclear power stations, steel and iron casting).

Novomoskovsk-Remstroyservis LLC is the largest enterprise ***producing machines and equipment***. It manufactures and maintains equipment for chemical production. Elektropribor JSC and Khimservis JSC are another large enterprises in this field.

Production of electric machines and equipment is performed by Novomoskovsk Wiring Plant and Novomoskovsk enterprise Nizvolt LLC – enterprises specializing in producing low-voltage electrical machinery for electric networks, power stations, electrical substations of industrial and civil constructions, materials for cable placing and mechanical equipment.

Production of automobiles, trailers, and semitrailers is performed by Novomoskovsk Machine Engineering Plant Open JSC (microdistrict of Sokolniki). This enterprise manufactures industrial and technological products for community facilities and city electrical transport, as well as other industrial products.

The Municipal Entity has developed ***cellulose and paper production***. This field is presented by such a large enterprise as GOTEK-Center JSC – one of leaders of packaging field in the Russian Federation, specializing in production of packaging materials out of corrugated board, plastic, and formed paper stock. The enterprise’s authorities plan to realize an investment project to construct a factory to produce test liner and waste fluting.



Publishing and printing activity is presented by Editorial Office of “Novomoskovskaya Pravda” Public Institution and Novomoskovsk Publishing Office Open JSC.

Novomoskovsk Mill Plant JSC (production of flour and feed concentrates) and Novomoskovsk Bread-Baking Complex Production-Commercial Enterprise JSC are the largest food industrial enterprises.

8. 2. Construction

Housing construction is one of key sectors and to a large extent defines solutions of technical, economic and social development problem of economy of the Municipal Entity in general. Volume index for January-December of 2020 compared to the corresponding period of 2019 accounts for 83.2 per cent.

In 2020 at the expense of all finance resources there were constructed 449 well-appointed flats with total floor area of 37.2 Thousand sq m (that is 21.3% less than for the corresponding period in 2019) including total floor area of 11.7 Thousand sq m built by means of individual construction.

Principal volume of today construction is carried out by separate owners/developers choosing infill development with the smallest expenses on service construction and demolition of dilapidated housing. Transfer from infill development and orienting developers on comprehensive development of micro districts appear to be the most promising directions.

8.3. Agriculture

Agricultural industrial complex of the Municipal Entity City of Novomoskovsk is significant to the regional economy. Today agriculture of the urban district specializes in cereals, potatoes, vegetables, feed crops, as well as in dairy farming and meat production.

At the beginning of 2021 principal agricultural producers appear to be 9 collective agricultural enterprises of different forms of propriety, 6,012 personal subsidiary plots and 27 agricultural purchasing and trading cooperative.

As of January 1, 2021 the total floor area of crops for all kinds of farms accounts for 49,090 ha.

As of January 1, 2021 cattle stock in farms of all categories accounts for 5.99 thousand heads, including cows – 2.68 thousand heads; pigs – 0.56 thousand heads; sheep and goats – 1.21 thousand heads. Number of all cattle breeds tends to reduce.

For the period of January-December, 2020 farms of all categories produced 17,091.3 tons of meat (cattle and poultry meat for slaughter in body-weight), 21,526.8 tons of milk, 4,574 thousand eggs. Compared to the corresponding period of the previous year, production of meat increased by 1.9 per cent; of milk – by 5.1 per cent; egg production decreased by 36.5 per cent.

Agricultural enterprises produced 38.9% of cereals total output volume. Peasant (farm) enterprises practice cultivating cereals, potatoes, and vegetables.



Productivity of main crops in 2020 are: cereals – 47.3 centners per hectare (123.8% to previous year level), potatoes – 292.7 centners per hectare (95.5% to previous year level).

Due to cattle stock reduction the Municipal Entity sees gross meat production grow.

On the whole, the economic situation in the Municipal Entity enables to increase production of agricultural commodities.

9. Social Infrastructure

Living standards and quality of life of the population is strongly influenced by social sphere development, which includes institutions of healthcare, sports, education, culture and art, trade, social protection, and other facilities.

Today the Municipal Entity City of Novomoskovsk has got a network of service institutions uniting almost all kinds of amenities. Provision level of healthcare institutions, libraries, institutions of additional education for children can be described as high.

Social Service Institutions Provided for Population

Table No. 4

Name of indicator	Unit of Measurement	
Provision with: - hospital beds	Beds for every 10 thousand inhabitants	70.5
- outpatient-and-polyclinic institutions	Visits per a shift for every 10 thousand inhabitants	259.7
- doctors	People for every 10 thousand inhabitants	25.2
- nursing staff	People for every 10 thousand inhabitants	89.1
- public libraries	Institutions for every 100 thousand inhabitants	14.5
- culture and leisure institutions	Institutions for every 100 thousand inhabitants	13.1
- pre-school educational institutions	Positions for 100 children of pre-school age	65

10. Infrastructure of the Municipal Entity

10.1. Transport Infrastructure

The Municipal Entity City of Novomoskovsk is situated in the eastern part of Tula region 50 km away from the regional center.

The territory of the Municipal Entity is served by two means of transport – by rail and by road. They make up uniform system of transport routes providing inner and outer connection of the district with the regional center, as well as with other districts and cities of Tula region.

Near the western border of the urban district there are two branches of the international «North – South» transport passage represented by the federal M4 «Don» Moscow – Voronezh highway.

This highway together with the network of federal and regional highways directly intersecting the territory of the Municipal Entity makes up foundation of its primary highway system.



Motor-service leads in fulfilling freight and passenger traffic within the borders of the Municipal Entity.

Today by means of national autobus routes the city of Novomoskovsk is connected with such cities as Moscow, Tula, Voronezh, Kaluga, Ryazan, Venyov, and by suburban autobus routes with communities of the Municipal Entity, as well as with the neighboring districts of Tula region. In total there are 7 national, 7 inter-municipal and 14 suburban routes in the Municipal Entity.

Railway lines are represented by Moscow-Voronezh line which connects with Kaluga-Tula-Ryazhsk line. On the territory of the city of Novomoskovsk there are plenty of access railroads handling freight shipment for industrial enterprises and municipal warehouse organizations.

10.2. Civil Engineering Infrastructure

10.2.1. Water Supply

The Municipal Entity City of Novomoskovsk is supplied with water with underground sources located on the territory of water-supply and treatment facilities, as well as with water from separate wells on the territory of the city. Principal water intakes of the Municipal Enterprise Water-Supply Public Service appear to be Yudinsky, Belokolodezny, Lyubovsky, and Shatsky ones which are located outside the city and operate useful ground water resources explored in different times amounting to 97.2 thousand m³/day. Other 5 water intakes of the Municipal Enterprise Water-Supply Public Service are situated in different parts of the city. They are composed of 1-3 wells and produce in total 5.0 thousand m³/day.

Novomoskovsky Gorodskoy Vodokanal LLC (Novomoskovsk City Water Supply and Waste Water Treatment Plant LLC), Municipal Unitary Enterprise Housing Service Agency, and Municipal Unitary Enterprise Rural Housing and Utility Service maintain water supply system and provide both population and enterprises with fresh water.

10.2.2. Waste Water Disposal

The city of Novomoskovsk has centralized water disposal system. The sewerage system was constructed taking into account local topography. Drains from dwelling houses, organizations, and industrial enterprises spontaneously go through the city public sewerage system to sewerage pump stations. There are 15 sewerage pump stations working in the city.

10.2.3. Heat Supply

Companiya Communal'noy Sfery LLC (CCS LLC) and branch of Quadra Central Generation JSC provide the city with heat. Every boiler house serves its heat district or object. Heat supply of settlements of the Municipal Entity is provided with centralized heat sources and decentrally with local boiler houses and autonomous heat sources. In general, boiler houses use piped gas as fuel.

10.2.4. Gas Supply

Gas supply of the urban district is fulfilled basing on usage of piped natural gas from several northern gas fields.

Gas supply of the urban district with natural gas is realized subject to decisions of the Gas supply and gas infrastructure development plan of Novomoskovsk district designed as part of the General plan on gas supply and gas infrastructure development of Tula region by Gazprom Promgaz Open JSC.

Gas feeding to the city of Novomoskovsk is carried out through three gas distribution stations (GRS): Uzlovaya, Ilyinskaya and Knyagininskaya ones.

Degree of natural gas infrastructure development of the city of Novomoskovsk and Novomoskovsk urban district accounts for 89.5%.

Areas of detached houses are supplied with liquefied hydrocarbon gas. Gas filling stations (GNS) are Bogoroditskaya and Venyovskaya ones.

10.2.5. Power Supply

Novomoskovsk Hydro-Electric Power Station and Tulenergo power system provide electric power supply to consumers of the Municipal Entity City of Novomoskovsk. Power from Novomoskovsk Hydro-Electric Power Station to consumers is transferred on high voltage power line-220 kW through two «Khimicheskaya» and «Severnaya» substations at voltage of 220\110 kW, situated on the territory of the urban district.

Lines at voltage of 220 kW connect Novomoskovsk Hydro-Electric Power Station with Moscow power system, as well as with Ryazan power system. Electric power at voltage of 110 kW is supplied to consumers of the city of Novomoskovsk, as well as of neighboring district of Zadonye, Lyutorichi, Mshanka, Sokolniki, Vilenki, and other.

Electric power distribution among consumers of the Municipal Entity City of Novomoskovsk is carried out with high voltage power line 110 and 35 kW from 16 existing substations at voltage of 110 and 35 kW.

11. Industrial Parks of the Municipal Entity

11.1. Industrial Park of Novomoskovsk Joint Stock Company Azot JSC

Location of the site	City of Novomoskovsk, Tula region, Russian Federation
Location area of the site (address)	10 Svyazi street, city of Novomoskovsk, Tula region
Distance from the nearest highway (name), km.	7 km away from M4 Moscow-Don Highway
General characteristics of the site	
Area of the land plot (site), ha	100
Category of land	Lands of inhabited localities. It is permitted to use them for production goals.
Nearest objects, name, distance (housing development, industrial and agricultural facilities)	Novomoskovsk Joint Stock Company Azot Open JSC, Novomoskovsky Khlor LLC, Novomoskovskiye Polyefiry LLC, Novomoskovsky Plastic LLC, NIAP-Katalizator Open JSC, NORE Open JSC, Novomoskovsky Remstroyservis LLC, Germaniy i Prilozheniya LLC

		Housing development – 1.5 km	
Site provision with engineering and transportation infrastructure			
Resource	Units of Measurement	Capacity	Availability (present, none; if none, what is the distance from the nearest network)
Electrical energy	MW	250	Present 6,10kW
Natural gas	kg	Subject to agreement	Present 3,9,12 kg
Water supply	m ³ /hour	River water-3000 Drinkable water-100	
Wastewater disposal system	m ³ /hour	700	Present. Nitric, organic, soil system, industrial showery system
Vapor	t/hour	12 kg-60t/h 2,5-3,5kg-60-100g/h Subject to agreement	
Dried air	m ³ /hour	500	Present 4-4.5 kg
Treatment facilities	m ³ /hour	3000	Possibility of enlargement
Propositions for the site usage		For production deployment. Requirements: -high-technological -ecological	
Conditions of submission		Acquisition of no less than 2 ha as property	
Infrastructure			
Warehouse premises, catering facilities	There are additional 28 ha		
Protected perimeter	present		
Transportation system (motorways, railway economy)	present		
Borders of sanitary-protection zone	1 km		
Parking lots for automobiles and trucks	present		
Services			
Engineering			
Power supply	present		
Improvement (cleanup of premises and territories)	present		
Waste disposal (utilization)	present		
Sewage admission and treatment	present		
Fire, gas security	present		
Laboratory, Technical quality support center, weighing station	present		
Washing and weighing tank cisterns	present		
Connection	present		
Career enhancement	Study center		
Security, pass control	yes		
Healthcare	first-aid posts, polyclinic		
Catering facilities	canteens		
Design documentation development	yes (PCD)		
Proprietor (leaseholder) of the investment site			
Name	Novomoskovsk Joint Stock Company Azot Open		

	JSC
Registered address	10 Svyazi street, city of Novomoskovsk, Tula region
Contact person	Krivoruchko Evgeny Vladimirovich
Position of contact person	Administrative Director of Novomoskovsk Joint Stock Company Azot JSC
Telephone/fax	8(48762) 2-22-22

11.2. Industrial Park of PromTechnoPark LLC

Location of the site			
Location area of the site (address)		72 Komsomolskoye highway, city of Novomoskovsk, Tula region 301653	
Distance from the nearest highway (name), km.		15 km away from M4, Moscow – Rostov Highway	
General characteristics of the site			
Area of the land plot (site), ha		128.25 ha	
Category of land		Lands of household development	
Nearest objects, names, distance (housing development, industrial and agricultural facilities)		City of Novomoskovsk, Tula region, distance – 3 km	
General characteristics of buildings and constructions, located on the site			
Name of buildings, constructions	Area, sq. m	Operational characteristics	Opportunity of enlargement
Uninhabited detached buildings, constructions of industrial productions	433,516.4604	Industrial facilities	Present
Site provision with engineering and transportation infrastructure			
Resource	Units of measurement	Capacity	Availability (present, no; if no, put distance from the nearest network)
Electrical energy	MW	50	present
Water supply	m ³ /year	516,000	present
Wastewater disposal system	m ³ /month	25,000	present
Heat supply	Gcal/month	7,000	present
Gas	m ³ / month	4,000,000	present
Vapor		P=10kgf/cm ² (Q=30m/h)	present
Treatment facilities	m ³ /month	25,000	present
Infrastructure			
Warehouse premises, catering facilities		present	

Protected perimeter	present
Transportation system (motorways, railway economy)	present
Borders of sanitary-protection zone	present
Parking lots for automobiles and trucks	present
Services	
Engineering	present
Power supply	present
Improvement (cleanup of premises and territories)	present
Waste disposal (utilization)	present
Fire security	present
Connection	present
Security, pass control	present
Proprietor (leaseholder) of the investment site	
Name	PromTechnoPark Limited Liability Company
Registered address	72 Komsomolskoye highway, city of Novomoskovsk, Tula region 301653
Contact person	Sergei Mikhailovich Gal'cev
Position of contact person	CEO
Telephone/Fax	8(48762)2-11-73; mobile 8-9036977910